



Defensive linemen could play a key role in SIC this year

By Rachel Roberts
Idaho Statesman

Starting quarterbacks will have to keep one eye on the line of scrimmage when they play Timberline and Eagle this season.

That's because the top two sack leaders from a year ago are back for another season at their respective schools.

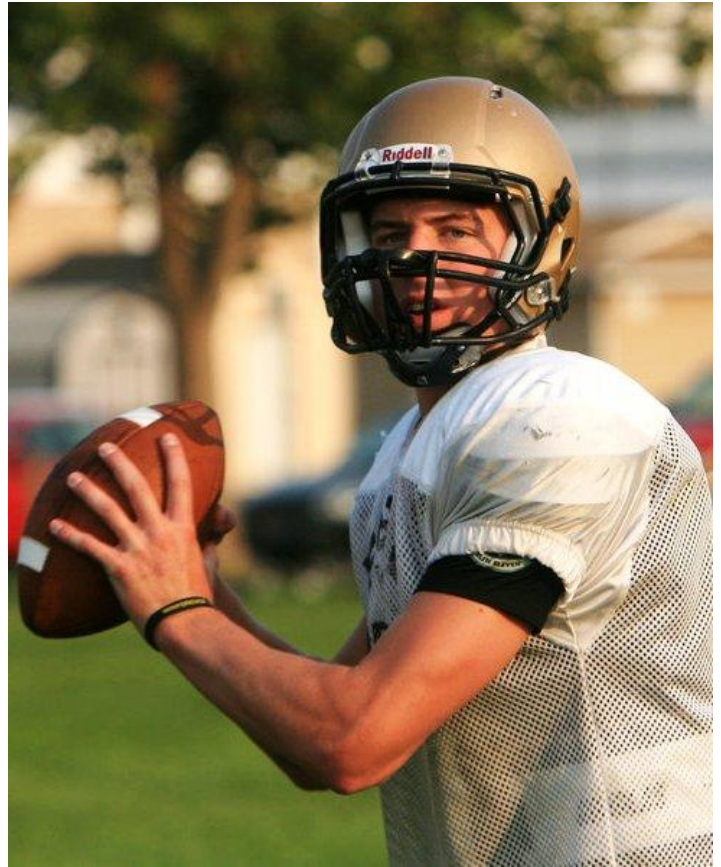
Eagle defensive lineman Corey Nielson recorded a 5A Southern Idaho Conference-best nine sacks during the 2011 regular season, accounting for 56 lost yards. The 6-foot-3, 205-pound senior has caught the attention of college coaches.

"There is no doubt he has a gift for rushing the passer," Eagle coach Paul Peterson said. "For most offensive tackles, he's just too quick and too fast and too long for them."

After focusing on defense in 2011, Nielson will also start at offensive tackle for the Mustangs this season.

At Timberline, 6-5, 225-pound junior defensive end Don Hill is just getting started. Hill finished second in the conference last season with seven sacks for a loss of 59 yards. Third-year Timberline coach Kirk Copeland said college coaches are inquiring about the hard-hitter.

"Quarterbacks are definitely going to be aware of his presence," Copeland said. "He's big, he's strong, he's fast, he's athletic and he has a passionate desire to get to the quarterback."



Capital QB Makena Simis had most people thinking the Eagles would win the SIC this year.

2012 COACHES' PREDICTIONS

(first-place votes in parentheses)

1. Capital Eagles (6)
2. **MTN. VIEW MAVERICKS (3)**
3. Rocky Mtn. Grizzlies (1)
4. Eagle Mustangs
5. Centennial Patriots
6. Meridian Warriors
7. Borah Lions
8. Vallivue Falcons
9. Timberline Wolves
10. Boise Braves

IDAHO STATESMAN PREDICTIONS

1. Capital Eagles
2. **MTN. VIEW MAVERICKS**
3. Meridian Warriors
4. Rocky Mtn. Grizzlies
5. Centennial Patriots
6. Eagle Mustangs
7. Vallivue Falcons
8. Borah Lions
9. Timberline Wolves
10. Boise Braves

2011 STANDINGS

	<u>W</u>	<u>L</u>	<u>Pct.</u>	<u>W</u>	<u>L</u>	<u>Pct.</u>
Eagle	8	1	.889	10	2	.833
Capital	7	2	.778	8	3	.727
Mountain View	7	2	.778	7	3	.700
Meridian	6	3	.667	6	4	.600
Borah	5	4	.556	5	4	.556
Centennial	4	5	.444	4	5	.444
Rocky Mountain	3	6	.333	3	7	.300
Timberline	3	6	.333	3	6	.333
Vallivue	2	7	.222	3	7	.300
Boise	0	9	.000	0	9	.000

MOUNTAIN VIEW FOOTBALL: Newspaper article

RETURNING ALL-CONFERENCE PLAYERS

OFFENSE

POS. (team)	NAME	YR.	SCHOOL
RB (1st)	TJ Clarke	Sr.	Capital
QB (2nd)	Makena Simis	Sr.	Capital
RB (2nd)	Hunter Kenyon	Sr.	Borah
OL (2nd)	Mason Hampton	Sr.	Meridian
QB (HM)	KAI TURNER	JR.	MOUNTAIN VIEW
QB (HM)	Tanner Gustavsen	Sr.	Boise
WR (HM)	COLLIN SALE	SR.	MOUNTAIN VIEW
WR (HM)	JOSH BUSS	JR.	MOUNTAIN VIEW
WR (HM)	Jacob Foley	Jr.	Capital
OL (HM)	BJ Verduzco	Sr.	Vallivue

DEFENSE

POS. (team)	NAME	YR.	SCHOOL
LB (1ST)	LANE CHADWICK	SR.	MOUNTAIN VIEW
LB (2nd)	Jack Tate	Sr.	Timberline
DB (2nd)	Kellen Copeland	Sr.	Timberline
DL (HM)	Don Hill	Jr.	Timberline
DL (HM)	Jaren Kahoiwai	Sr.	Capital*
DL (HM)	Corey Nielson	Sr.	Eagle
LB (HM)	Dallas Wallace	Sr.	Vallivue
LB (HM)	Brett Walton	Sr.	Boise
P (HM)	Sean Davis	Sr.	Vallivue

* Kahoiwai played for Boise last season

2011 REGULAR-SEASON LEADERS

PASSING

Tanner Mangum, Eagle, 199-of-295, 2,882 yards, 26 TDs, 9 int
Tanner Gustavsen, Boise, 152-of-342, 1,895 yards, 11 TDs, 17 int

RUSHING

Mike Burk, Vallivue, 204 carries, 1,386 yards, 12 TDs
TJ Clarke, Capital, 222 carries, 1,338 yards, 7 TDs

RECEIVING

Parker Garner, Vallivue, 28 rec., 761 yards, 8 TDs
Austin Diffey, Eagle, 17 rec., 507 yards, 5 TDs

INTERCEPTIONS

D.J. Dean, Eagle, 6; **BEAU WHITE, MTN. VIEW, 5**

SACKS

Corey Nielson, Eagle, 9

5A state champions (since 2000)

Year	Team	Coach	Year	Team	Coach	Year	Team	Coach
2011	Coeur d'Alene	Shawn Amos	2007	Meridian	Kip Crofts	2003	Centennial	Lee Neumann
2010	Coeur d'Alene	Shawn Amos	2006	Lake City	Van Troxel	2002	Highland	Gino Mariani
2009	Eagle	Paul Peterson	2005	Meridian	Mike Virden	2001	Eagle	Mike Glenn
2008	Highland	Gino Mariani	2004	Twin Falls	Tobe Smith	2000	Highland	Brent Koetter

FOOTBALL16 • SUNDAY, AUGUST 19, 2012

IDAHO STATESMAN • IDAHOSTATESMAN.COM

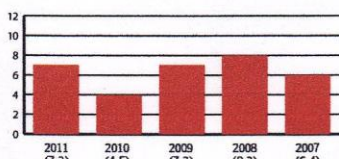
MOUNTAIN VIEW MAVERICKS

SCHEDULE

DATE	OPPONENT	TIME
Aug. 30	at Meridian	7 p.m.
Sept. 7	Capital	7 p.m.
Sept. 14	Timberline	7 p.m.
Sept. 22	at Borah (DLP)	1 p.m.
Sept. 28	Boise	7 p.m.
Oct. 5	at Rocky Mountain	7 p.m.
Oct. 12	Centennial	7 p.m.
Oct. 19	Eagle	7 p.m.
Oct. 26	at Vallivue	7 p.m.

Coach: Judd Benedick, sixth season, 32-17
Stadium: Mountain View High, Meridian

WINS THE PAST 5 YEARS



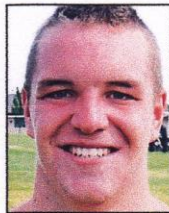
2011 postseason: Lost to Coeur d'Alene 27-14 in state quarterfinals

PLAYERS TO WATCH



Lane Chadwick
LB

The 5-10, 205-pound senior landed on the 5A All-Idaho second team and 5A SIC first team at linebacker last season with 112 tackles — including 15 for loss — and one interception. "He's got to put on that leadership hat that some of the older guys wore last year," coach Judd Benedick said.



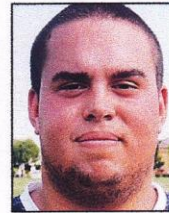
Kai Turner
QB

This will be the 5-9, 170-pound junior's third year as a starter, and he is coming off a season in which he passed for 1,254 yards and 11 TDs with only one INT. "I look for him to have a really solid year and lead our offense," Benedick said. Turner also added 649 rushing yards and another nine TDs.



John Munger
OL/DL

The 6-4, 285-pound senior and two-year letterman will start at left tackle after playing right tackle last season for a team that averaged 27.8 points per game. "He's going to have to be a two-way guy for us this year, and he'll play almost the whole game on both sides of the ball," Benedick said.



Dylan Garcia
OL/DL

The three-year letterman will move from guard to center, playing a crucial role for a team that favors the shotgun spread. "His snaps are right on the money," Benedick said. "He'll be the guy that will make all the right calls for us at center, and we know he'll be consistent with his snaps."

SCOUTING REPORT

OFFENSE

Offense could be the Mavericks' strong suit in 2012, as dual-threat quarterback Kai Turner will have plenty of talented options to throw to, including returning receivers Josh Buss (28 catches, 412 yards, 4 TDs), Connor Armstrong (15-207-3) and Collin Sale (14-143-1). "We have a lot of strong weapons, but we are really young up front," lineman Dylan Garcia said.

DEFENSE

The Mavericks limited opponents to a 5A SIC regular-season best 15.6 points per game last season, but have to fill eight starting positions vacated by seniors. Thirteen lettermen return, led by two-year starters Jordan Duncan (DL), Lane Chadwick (LB) and Beau White (DB).

OVERVIEW

Coach Judd Benedick cites defense and the offensive line as two key areas that will need to come together quickly in order to make another run at the state playoffs. "We will have to mature quickly on both sides of the ball," Benedick said. "This will not be the big, physical team we had last year, but we should have good team speed."